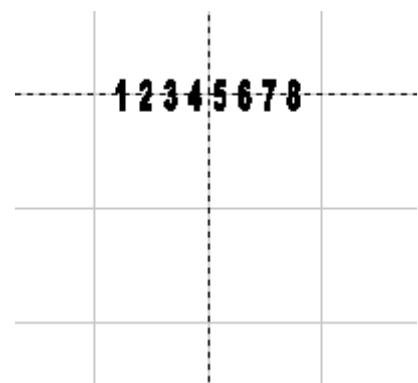
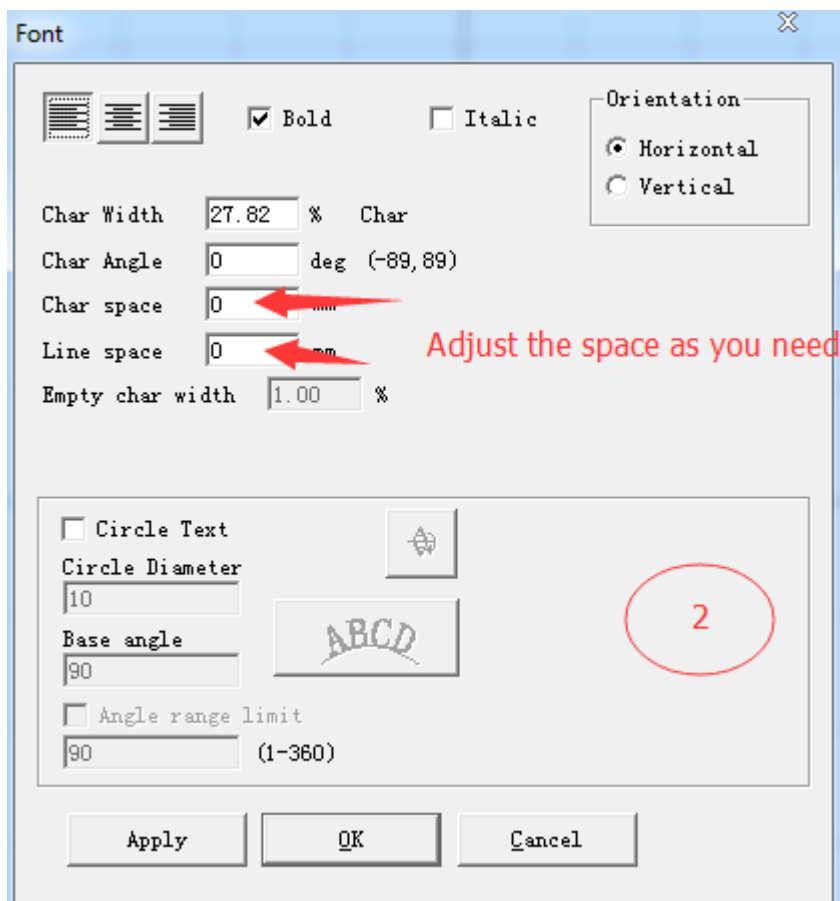
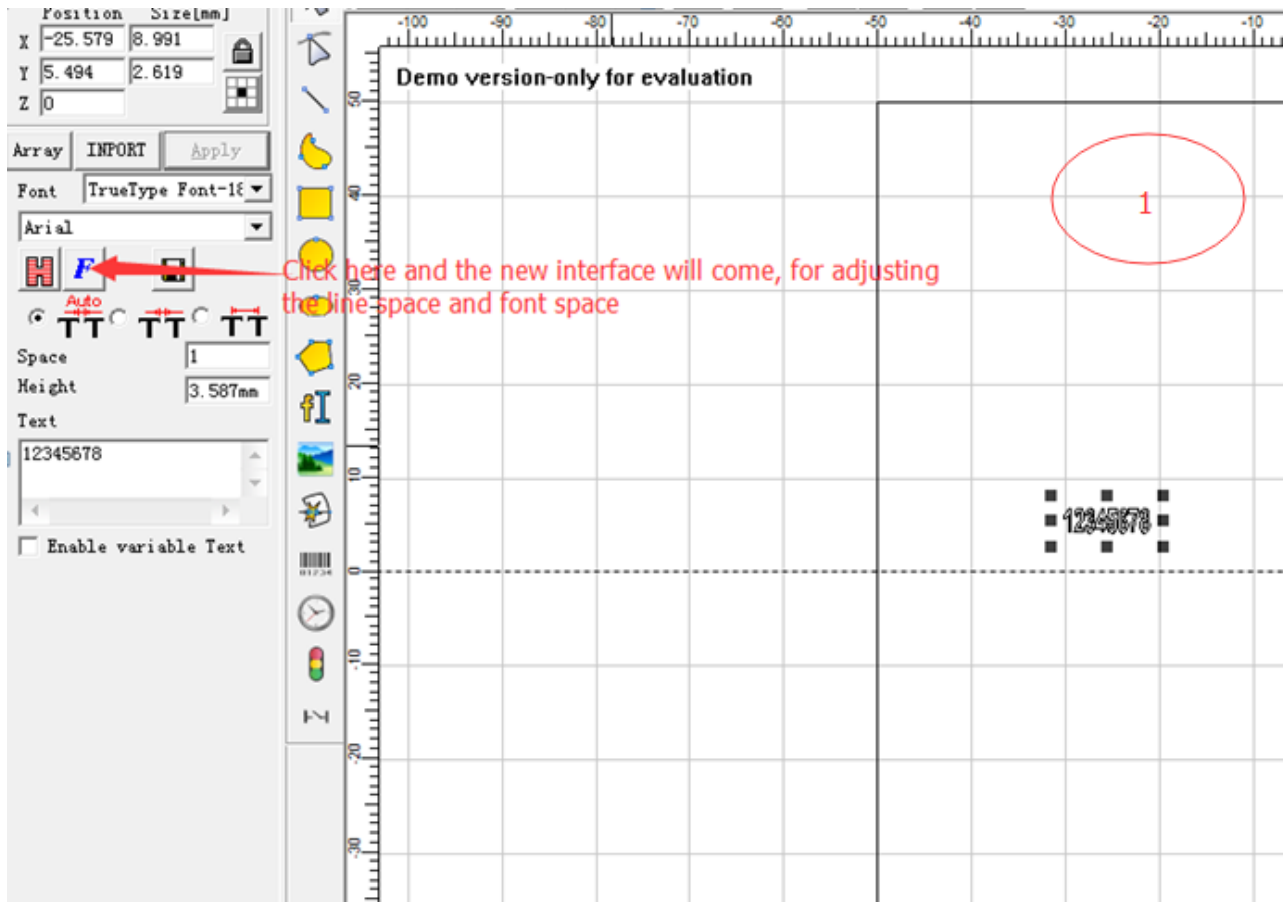
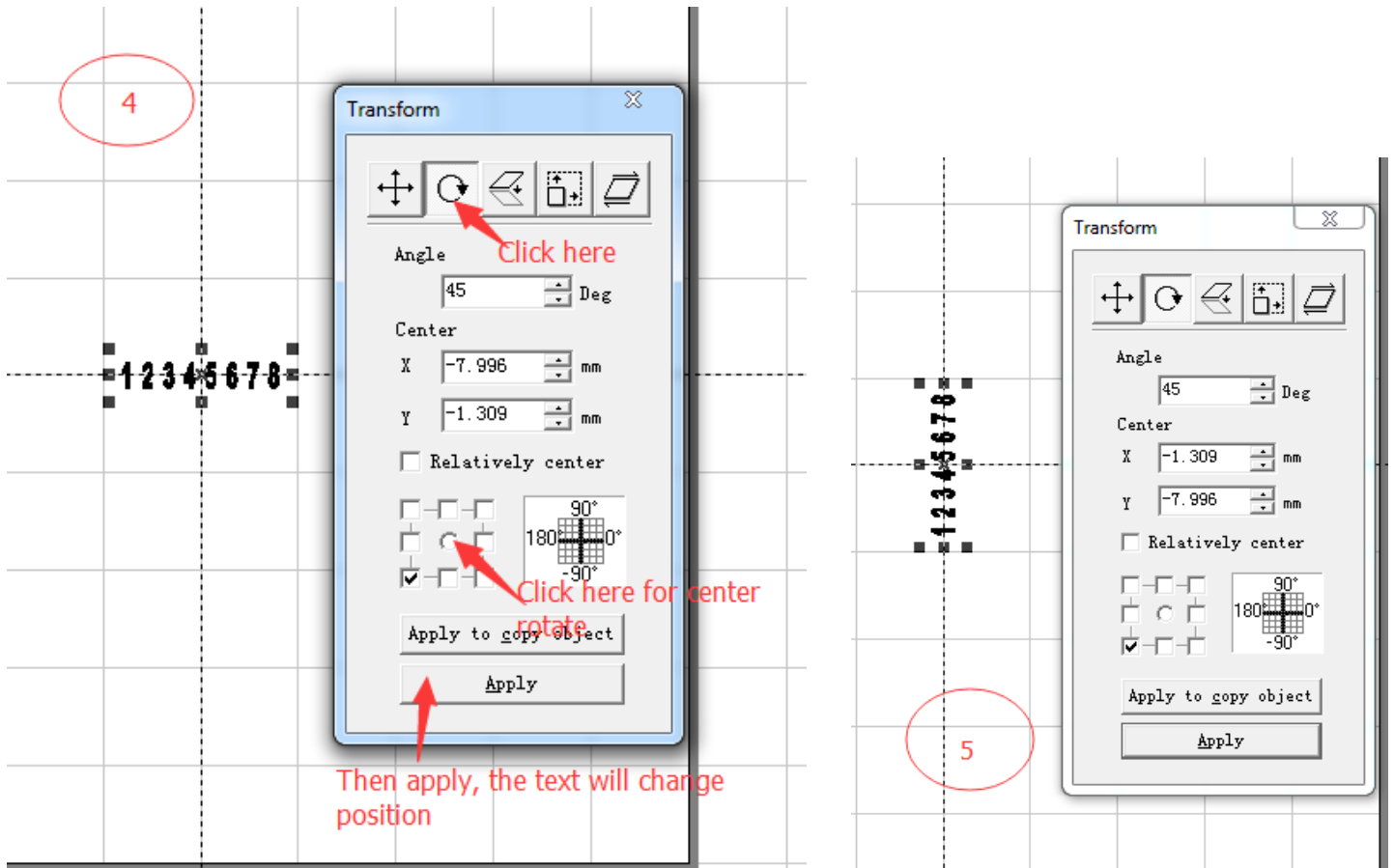


# Rotate Textmark

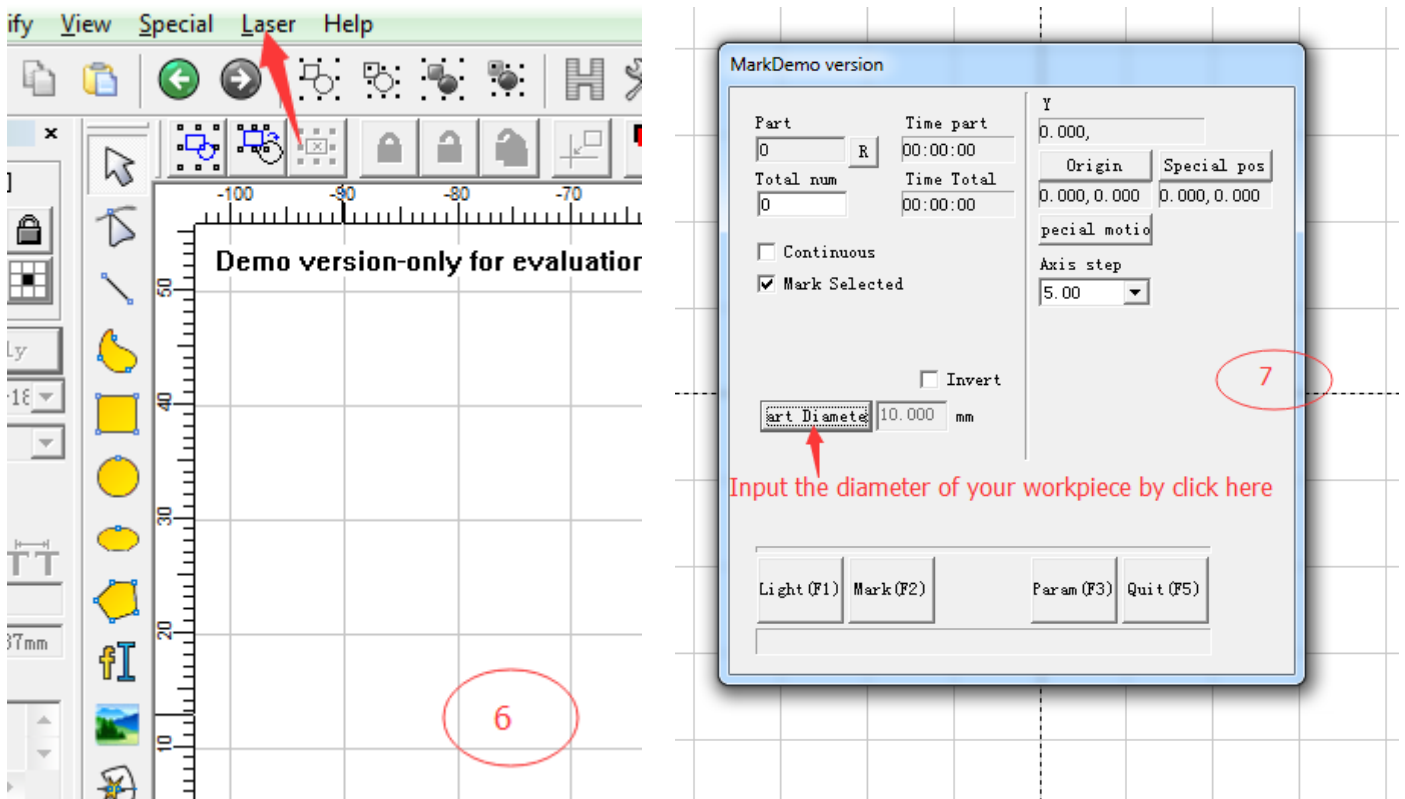
1. Firstly, edit one text, take '1245678' for example. Shown in picture 1.
2. Adjust the line space and fonts space shown in picture 1&2. For example, set the Char space as 1mm, the text will become as shown in picture 3.



3. Transform the text in vertical by click 'Modify', and then 'Transform', the new interface will come as shown in picture 4. After apply, change the text in right position as shown in picture 5. And then close the transform interface.

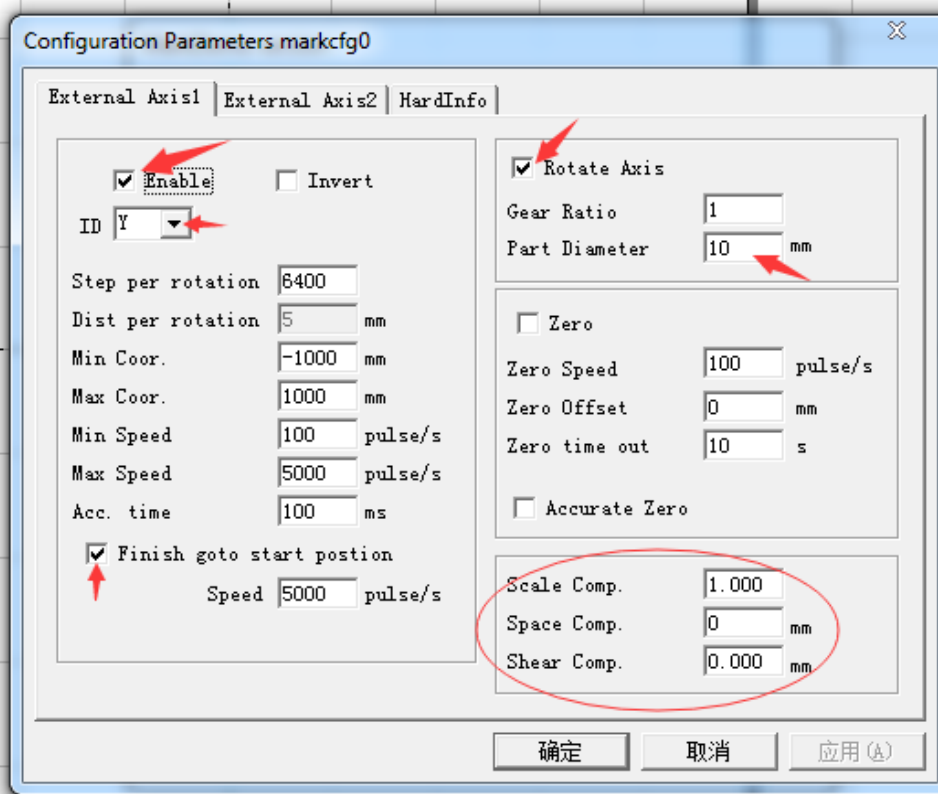


4. click 'laser' as shown in picture 6, choose 'Rotate Textmark', then the new interface will come as shown in picture 7, click 'part diameter', input the actual diameter of your workpiece. Click and choose 'Mark selected'.



5. Click 'F3', the new interface will come as shown in picture 8. Choose as shown with red arrow 'Enable', 'Y', 'Rotate'

Axis', 'Finish goto start position'. Note: the 'part diameter' is very important, should check the diameter for the workpiece and then input the correct diameter. And then you can redlight and mark.



6. if the mark still have problem, the character space is not perfect, can adjust the character&font space, or you can adjust the 'scale comp.' 'Space comp.' and 'shear comp.' as shown in picture in picture 8, till the marking becomes perfect.

Note: all of the marking work are based on proficiency or skill, when your engineer practice a lot, he will do it very easy.